



## EAR TAG REQUIREMENTS

### SOCIETY REQUIREMENTS FOR THE EAR TAGGING OF SHEEP

- All lambs which are to be registered **MUST** be tagged with the WHSS tag information
- The WHSS tag should be inserted as soon after birth as possible
- WHSS information can be added to the DEFRA tags provided that it is clearly separate from the official identity number and the two numbers can't be confused with each other.
- Separate WHSS tags may be used if preferred but to avoid confusion with official identifiers, these can't be yellow, black or red. They must be printed not handwritten.
- The Society has no preferred ear tag supplier and advises members to discuss suitable designs of ear tags with the suppliers of their choice.

For the WHSS to recognise the pedigree of any sheep it **MUST** carry WHSS tag information, displaying:

- **WHSS flock number of the breeder - e.g. 123**
- **An individual consecutive number**
- **The year of birth - e.g. 18 for 2018**

WHSS tags would read 123 01 18, 123 02 18, 123 03 18, etc.

Further guidance may be found in the Society Bylaws which are available as downloads from the website or from the Secretary.

### DEFRA REQUIREMENTS FOR THE IDENTIFICATION OF BREEDING SHEEP

DEFRA regulations state that all sheep born after 31<sup>st</sup> December 2009 and not intended for slaughter within 12 months of age, including all breeding sheep, must have two identifiers or ear tags containing a flock number (e.g. UK0123456 – your flock number with the addition of a leading zero) and an identical individual number. One ear tag must be electronic, coloured yellow and ideally put in the left ear, while the other should be non-electronic, any colour other than yellow, black or red and put in the opposite ear. Electronic tags will be printed with the same number that is carried by the electronic chip.

Sheep intended for slaughter up to 12 months old may be identified with a single EID batch tag. Further up to date help can be found on the DEFRA website <https://www.gov.uk/guidance/sheep-and-goat-keepers-how-to-identify-your-animals> or contact the DEFRA helpline on 03459 33 55 77 for additional guidance and verification.

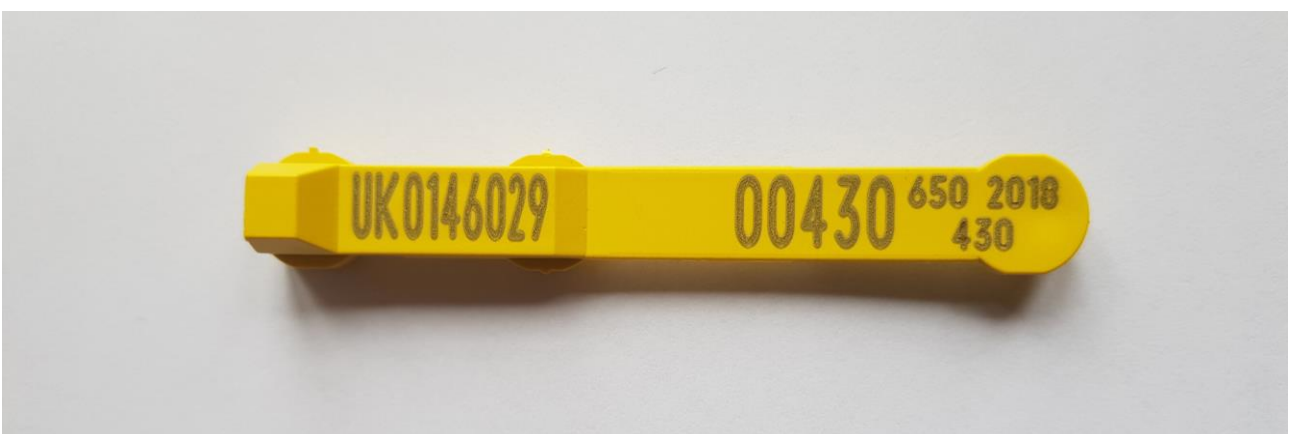
Samples of ear tags that are acceptable to the WHSS. Please note that these examples are not exhaustive and other tags will be equally acceptable providing they meet the requirements defined above.



1. Dedicated WHSS tag



2. Combined DEFRA & WHSS tag



3. Combined DEFRA & WHSS tag